



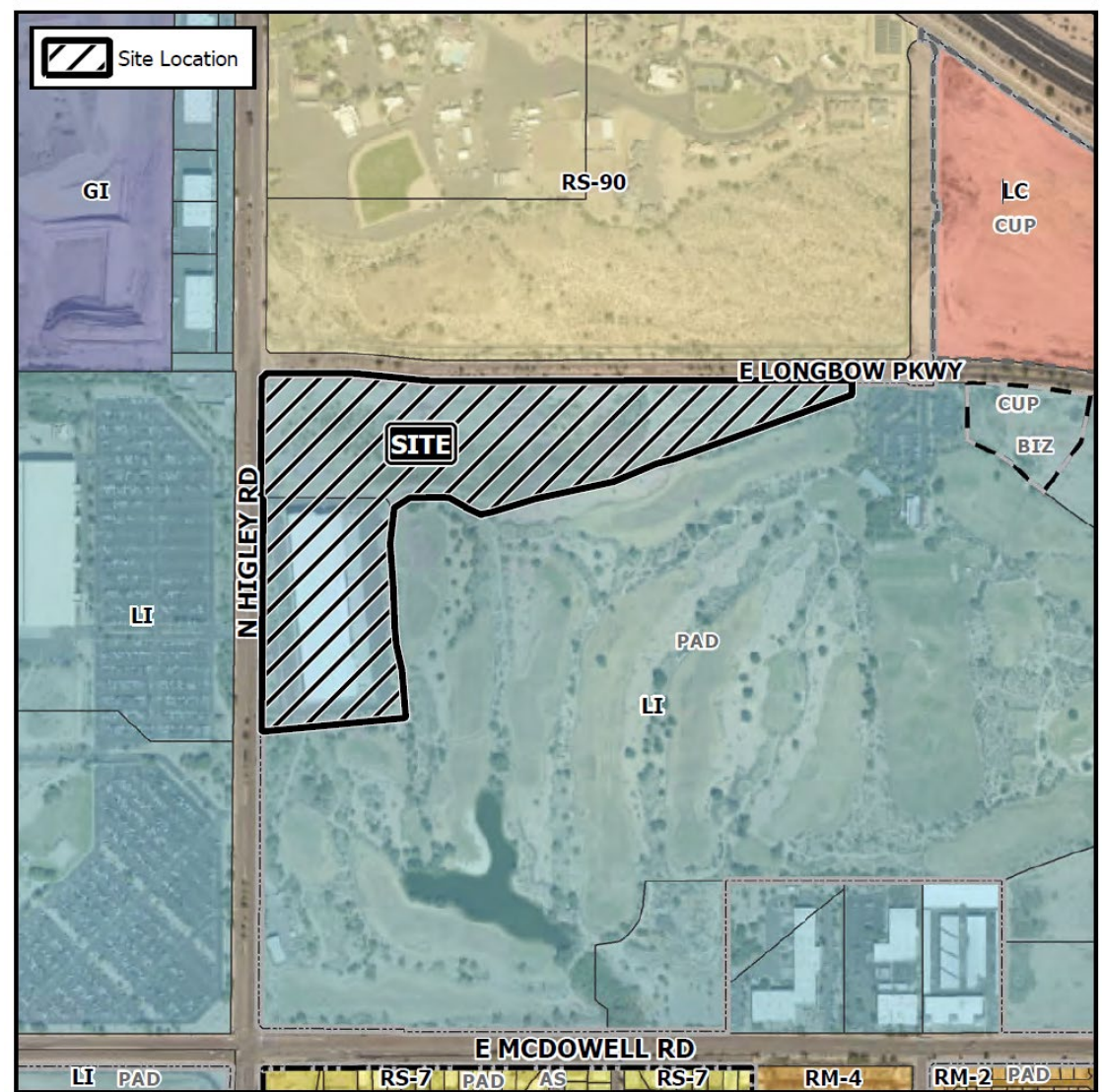
DRB20-00411

Lesley Davis, Senior Planner

July 14, 2020

Location

- North of McDowell Rd on east side of Higley Rd





Request

- Design Review

Purpose

- Shell warehouse remodel with new canopy structure & parking lot expansion

Street View



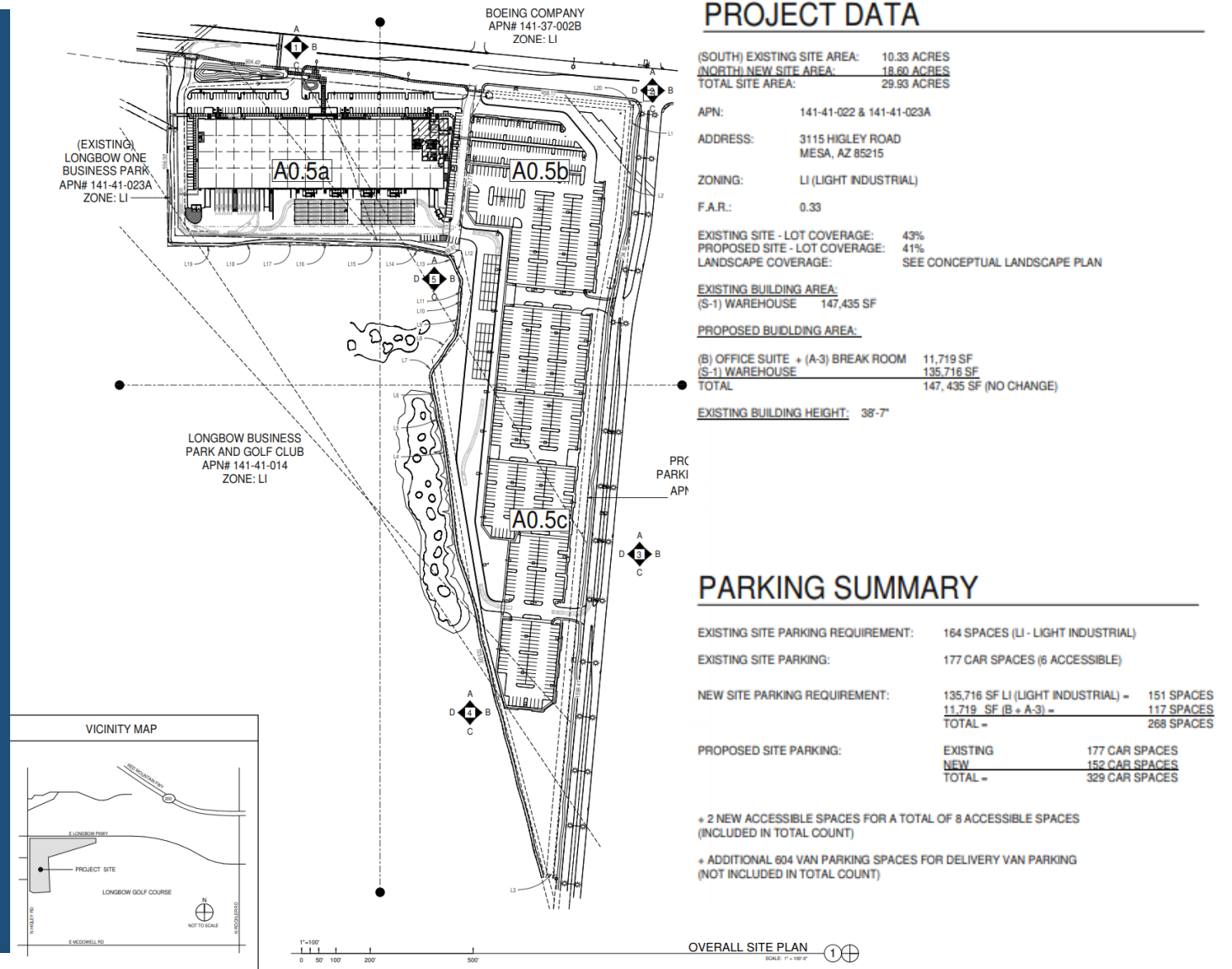
Looking east from Higley Road



Looking north from Longbow Parkway

Site Plan

- Existing building
- New canopy – east of existing building
- Parking lot expansion to the north
- Use – packing delivery service



Landscape Plan

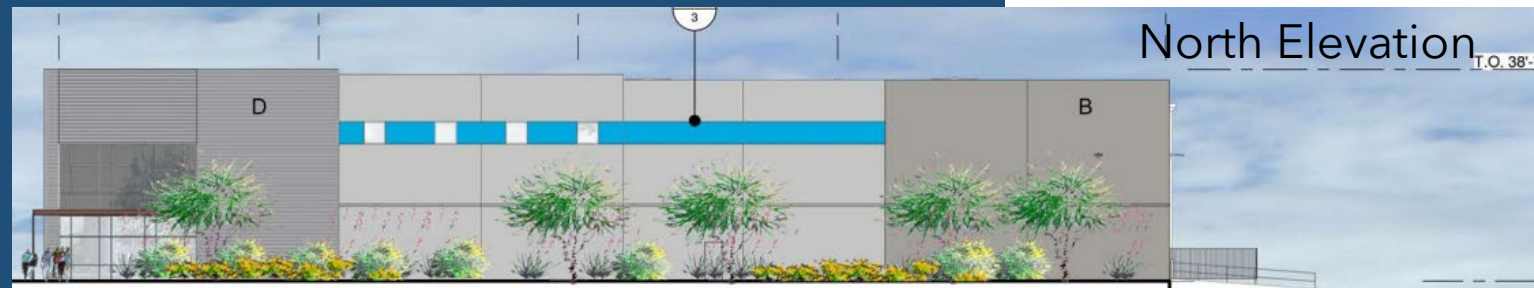


PLANT SCHEDULE

BOTANICAL NAME	COMMON NAME	PLANTING SIZE	QTY	COMMENTS
TREES				
Cercidium microphyllum	Foothill Palo Verde	15 Gal.	22	Standard Trunk Dense Canopy
Parkinonia x 'Desert Museum'	Desert Museum Palo Verde	24" Box	46	Standard Trunk Dense Canopy
Chilopsis linearis	Desert Willow	24" Box	34	Multi-Trunk Dense Canopy
Parkinonia praecox	Palo Brea	15 Gal.	6	Standard Trunk Dense Canopy
Prosopis chilensis	Chilean Mesquite	15 Gal.	10	Standard Trunk Dense Canopy
Vachella farnesiana	Sweet Acacia	24" Box	45	Standard Trunk Dense Canopy
	Salvaged Tree	36" Box	24	Standard Trunk Dense Canopy
	Salvaged Tree	Varies	56	Per Plan
ACCENTS/VINES				
Aloe barbadensis	Medicinal Aloe	5 Gal.	0	As Per Plan
Antigonon leptopus	Queen's Sheath Vine	5 Gal.	16	As Per Plan
Carmelina gigantea	Saguaro	6'-12"	11	As Per Plan
Dasylirion acrotrichum	Green Desert Spoon	5 Gal.	191	As Per Plan
Fouquieria splendens	Ocotillo	6'-8'	28	As Per Plan
Hesperaloe parviflora	Red Yucca	5 Gal.	154	As Per Plan
	Salvaged Saguaro		1	As Per Plan
SHRUBS				
Caesalpinia mexicana	Mexican Bird of Paradise	5 Gal.	63	As Per Plan
Caesalpinia pulcherrima	Red Bird of Paradise	5 Gal.	84	As Per Plan
Calliandra californica	Beja Red Fairy Duster	5 Gal.	0	As Per Plan
Dodonaea viscosa	Hopsced Bush	5 Gal.	0	As Per Plan
Encelia farinosa	Brittlebush	5 Gal.	108	As Per Plan
Larrea tridentata	Crocoite	5 Gal.	211	As Per Plan
Justicia epiglota	Chuparosa	5 Gal.	88	As Per Plan
Leucophyllum frutescens	Texas Sage	5 Gal.	23	As Per Plan
Simmondsia chinensis	Jojoba	5 Gal.	201	As Per Plan
Muhlenbergia capillaris	Regal Mist	5 Gal.	141	As Per Plan
Ruellia peninsularis	Beja Ruellia	5 Gal.	145	As Per Plan
Tecoma stans	Orange Jubilee	5 Gal.	88	As Per Plan
GROUND COVERS				
Acacia redolens	Trailing Acacia	1 Gal.	14	As Per Plan
Dalea greggii	Trailing Dalea	1 Gal.	14	As Per Plan
Lantana hybrid	New Gold Lantana	1 Gal.	320	As Per Plan
Lantana montevidensis	Purple Trailing Lantana	1 Gal.	121	As Per Plan
Bellis multiflora	Desert Marigold	1 Gal.	156	As Per Plan
MISCELLANEOUS				
Decomposed Granite - 1/4" Plus Mineral Park Gold or equal 3" Depth in All Planting Areas (Typ) - 335,252 SQ. FT.				

	PUBLIC WALK	1025 SQ. FT.
	PUBLIC WALK WITH SHADE COVERAGE	5481 SQ. FT.
	COVERAGE %	54% (50% REQ.)

Elevations



Elevations



East Elevation



South Elevation



Colors & Materials



EXISTING GLAZING, NO CHANGE



EXISTING ANODIZED ALUMINUM STOREFRONT,
NO CHANGE



B. PAVESTONE - SW 7642



A. COLONNADE GRAY - SW 7641



C. PANTONE - SW 2995 C

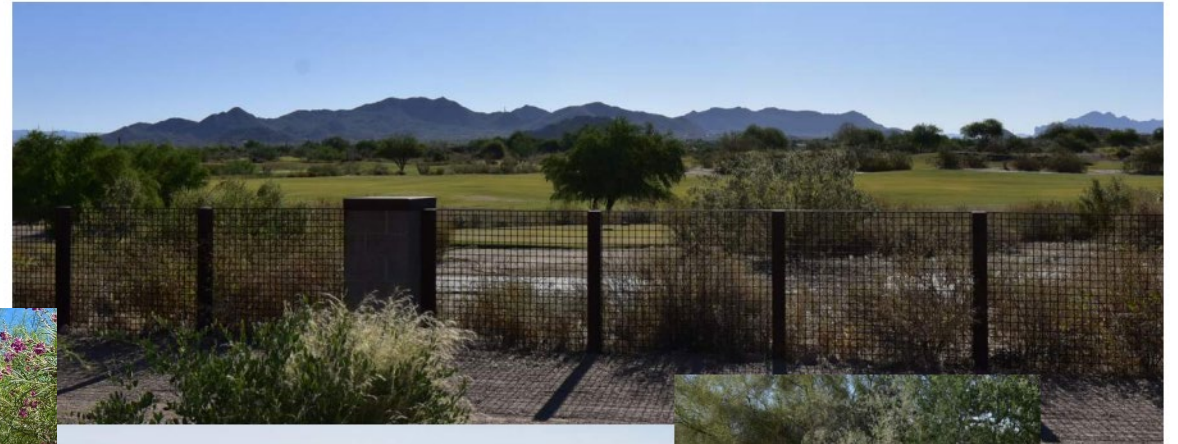


MATERIALS BOARD
PROJECT MESA
MESA, AZ

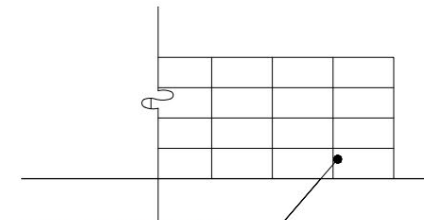
WARE MALCOMB

DAL20-0025-00
06.19.2020
SHEET
01

Site Details



Site Details



8X8X12 SMOOTH FACE GRAY
CMU BLOCK - STACK BOND

Lighting



DESCRIPTION

The Galleon™ LED luminaire delivers exceptional performance in a highly scalable, low-profile design. Patented, high-efficiency AccuLED Optics™ system provides uniform and energy conscious illumination to walkways, parking lots, roadways, building areas and security lighting applications. IP66 rated and UL/cUL Listed for wet locations.

SPECIFICATION FEATURES

Construction
Extruded aluminum driver enclosure thermally isolated from Light Squares for optimal thermal performance. Heavy-wall, die-cast aluminum end caps enclose housing and die-cast aluminum heat sinks. A unique, patent pending interlocking housing and heat sink provides scalability with superior structural rigidity. 3G vibration tested and rated. Optional tool-less hardware available for ease of entry into electrical chamber. Housing is IP66 rated.

Optics
Patented, high-efficiency injection-molded AccuLED Optics technology. Optics are precisely designed to shape the distribution maximizing efficiency and application spacing. AccuLED Optics create consistent distributions with the scalability to meet customized application requirements. Offered standard in 4000K (+/- 275K) CCT 70 CRI. Optional 3000K, 5000K and 6000K CCT.

Electrical
LED drivers are mounted to removable tray assembly for ease of maintenance. 120-277V 50/60Hz, 347V 60Hz or 480V 60Hz operation. 480V is compatible for use with 480V Wye systems only. Standard with 0-10V dimming. Shipped standard with Cooper Lighting Solutions proprietary circuit module designed to withstand 10kV of transient line surge. The Galleon LED luminaire is suitable for operation in -40°C to 40°C ambient environments. For applications with ambient temperatures exceeding 40°C, specify the HA (High Ambient) option. Light Squares are IP66 rated. Greater than 90% lumen maintenance expected at 60,000 hours. Available in standard 1A drive current and optional 600mA, 800mA and 1200mA drive currents (nominal).

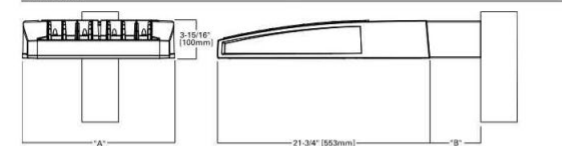
Mounting
STANDARD ARM MOUNT: Extruded aluminum arm includes internal bolt guides allowing for easy positioning of fixture during mounting. When mounting two or more luminaires at 90° and 120° apart, the EA extended arm

may be required. Refer to the arm mounting requirement table. Round pole adapter included. For wall mounting, specify wall mount bracket option. **QUICK MOUNT ARM:** Adapter is bolted directly to the pole. Quick mount arm slide into place on the adapter and is secured via two screws, facilitating quick and easy installation. The versatile, patent pending, quick mount arm accommodates multiple drill patterns ranging from 1-1/2" to 4-7/8". Removal of the door on the quick mount arm enables wiring of the fixture without having to access the driver compartment. A knock-out enables round pole mounting.

Finish
Housing finished in super durable TGIC polyester powder coat paint, 2.5 mil nominal thickness for superior protection against fade and wear. Heat sink is powder coated black. Standard housing colors include black, bronze, grey, white, dark platinum and graphite metallic. RAL and custom color matches available.

Warranty
Five-year warranty.

DIMENSIONS

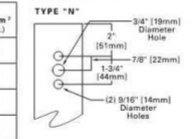


DIMENSION DATA

Number of Light Squares	"A" Width (394mm)	"B" Standard Arm Length (178mm)	"B'" Optional Arm Length ' ' (254mm)	Weight with Arm (lbs.)	EPA with Arm* (Sic. Ft.)
1-4	15-1/2" (394mm)	7"	10"	33 (15.0 kgs.)	0.96
5-6	21-5/8" (549mm)	7"	10"	44 (20.0 kgs.)	1.00
7-8	27-5/8" (702mm)	7"	13"	54 (24.5 kgs.)	1.07
9-10	33-3/4" (857mm)	7"	16"	63 (28.6 kgs.)	1.12

NOTES: 1. Optional arm length to be used when mounting two fixtures at 90° on a single pole. 2. EPA calculated with optional arm length.

DRILLING PATTERN



COOPER
Lighting Solutions

McGraw-Edison

Catalog #	Type
Project	
Comments	Date
Prepared by	



GLEON GALLEON LED

1-10 Light Squares
Solid State LED

AREA/SITE LUMINAIRE



CERTIFICATION DATA
3G Vibration Rated
DesignLights Consortium™ Qualified*
Dark Sky Approved (3000K CCT and warmer only)
IP66 Rated
ISO 9001
LM79 / LM80 Compliant
UL/cUL Wet Location Listed

ENERGY DATA
Electronic LED Driver
0.9 Power Factor
±20% Total Harmonic Distortion
120V/277V 50/60Hz
347V, 480V 60Hz
-40°C Min. Temperature
40°C Max. Temperature
50°C Max. Temperature (HA Option)

TDS00020EN
June 2, 2020 12:06 PM

FIXTURES S1, S2, S3, S4

Design Guidelines

Section 11-7-3

- | | |
|---|--|
| ✓ | Existing building design incorporates multiple materials |
| ✓ | Existing building includes varied building height |
| ✓ | Building orientation faces street with defined entries |

Summary

Findings

- ✓ Staff has no major concerns
- ✓ Project meets MZO requirements
- ✓ Meets Longbow Design Guidelines
- ✓ Staff welcomes any feedback